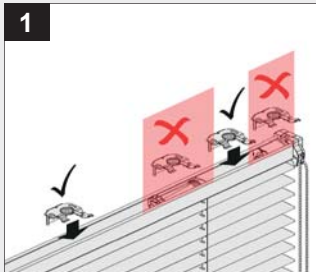


Montage **i**

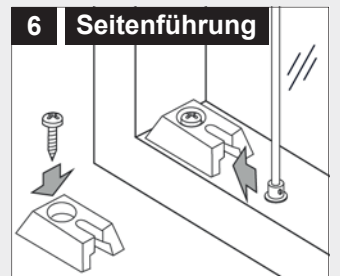
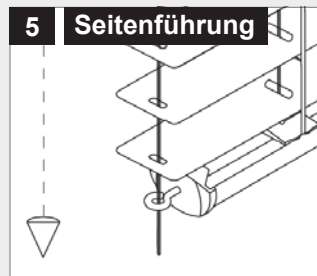
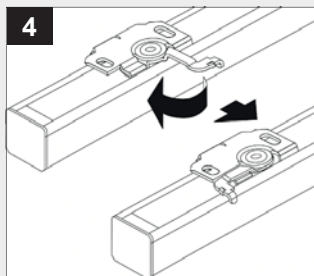
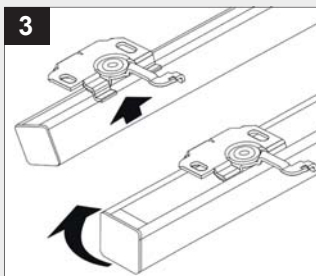
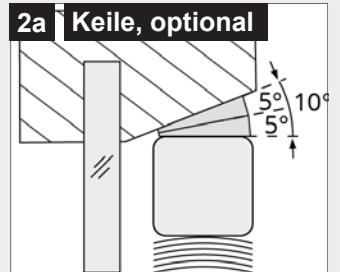
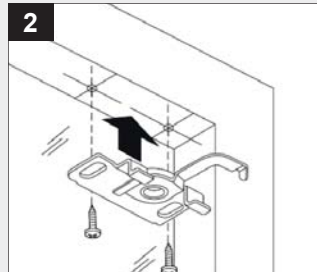
Holzjalousie 25 mm

Glasfalzmontage

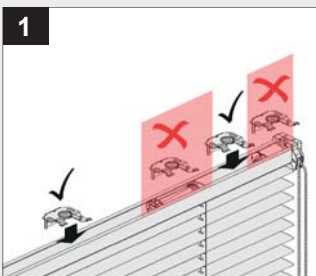


1a Trägeranzahl

- 2 Träger bis 70 cm Breite
- 3 Träger ab 70 cm Breite
- 4 Träger ab 140 cm Breite

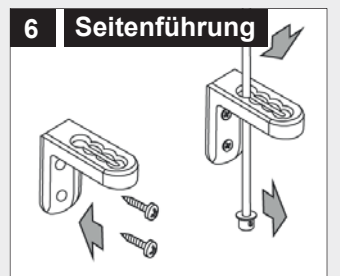
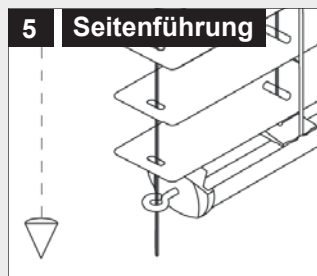
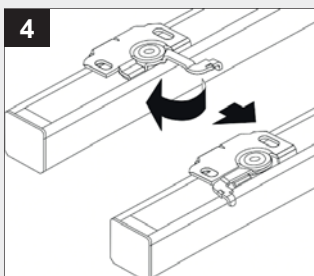
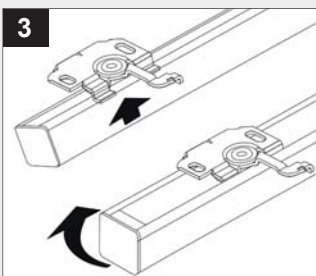
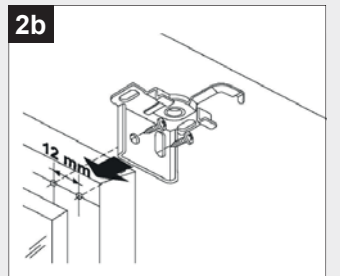
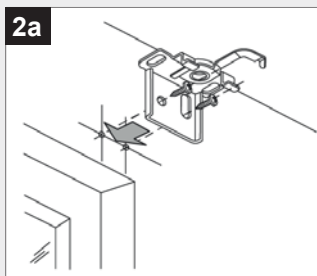


Wand/Fensterflügel

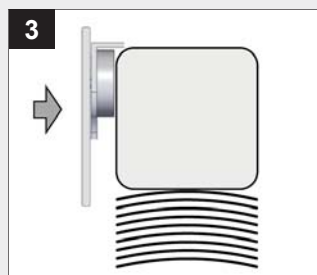
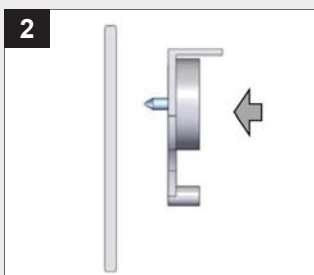
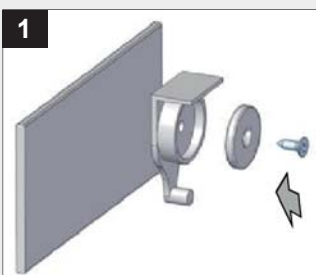


1a Trägeranzahl

- 2 Träger bis 70 cm Breite
- 3 Träger ab 70 cm Breite
- 4 Träger ab 140 cm Breite



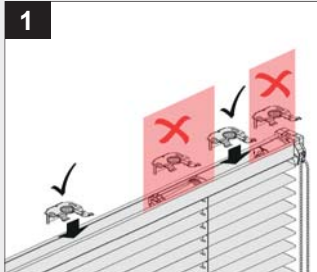
Montage der Abdeckblende



Montage **i**

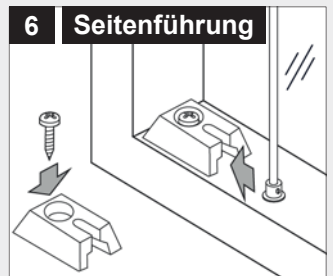
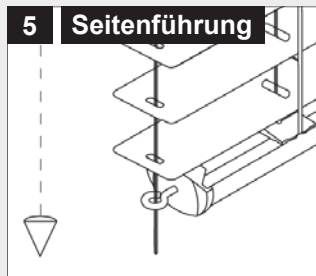
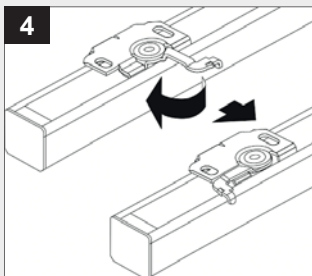
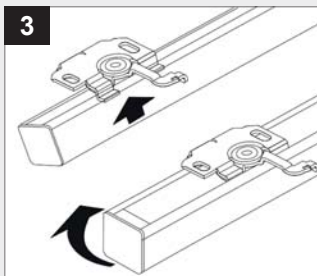
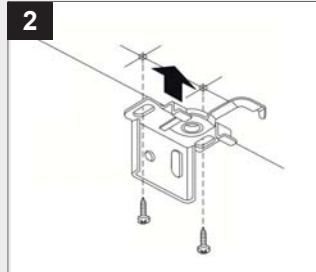
Holzjalousie 25 mm

Decke - Montage nach oben

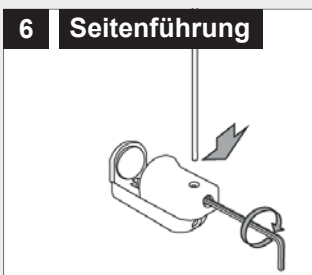
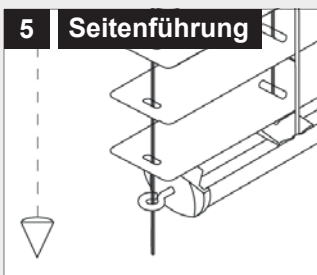
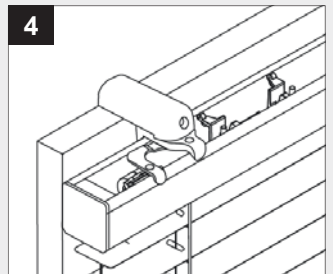
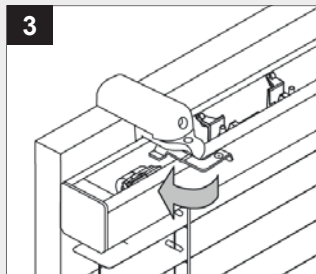
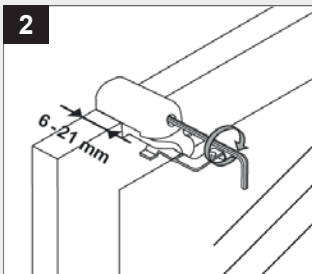
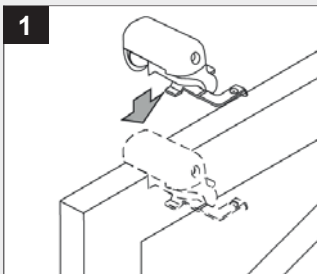


1a Trägeranzahl

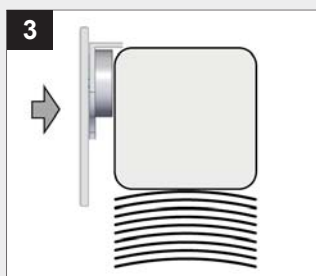
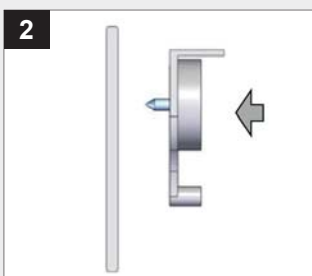
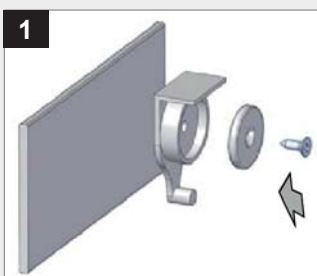
- 2 Träger bis 70 cm Breite
- 3 Träger ab 70 cm Breite
- 4 Träger ab 140 cm Breite



Klemmträger



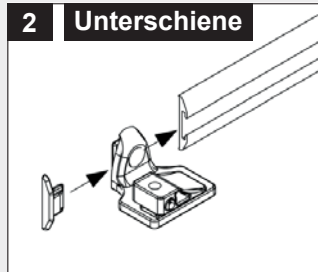
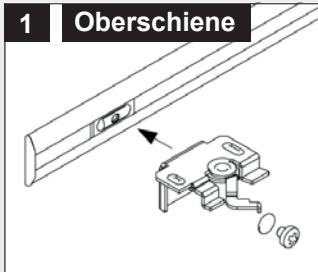
Montage der Abdeckblende



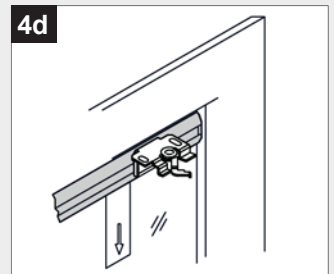
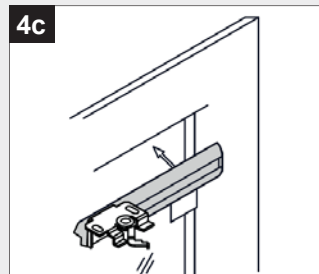
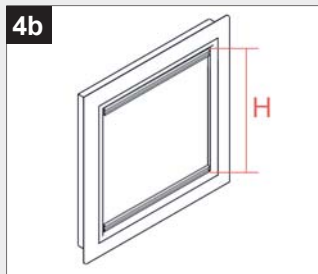
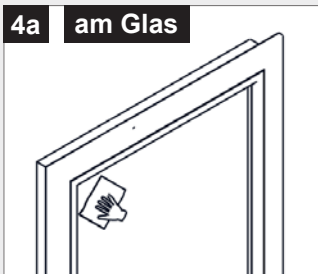
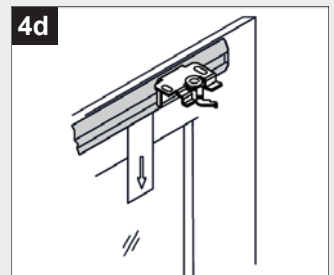
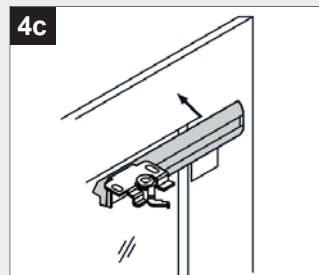
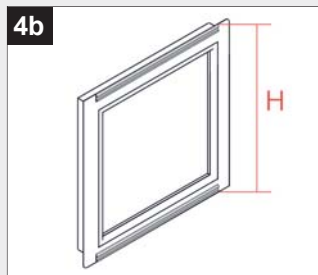
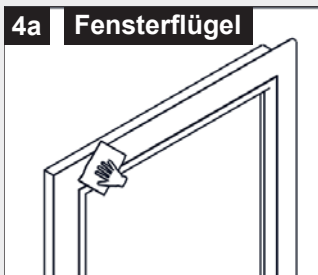
Montage **i**

Holzjalousie 25 mm - Klebemontage

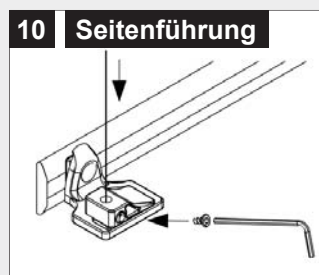
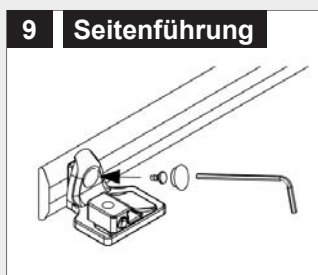
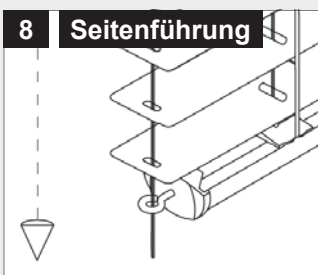
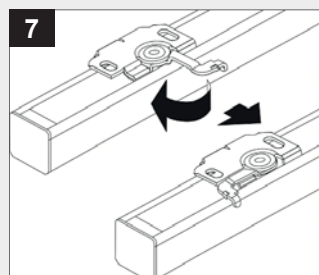
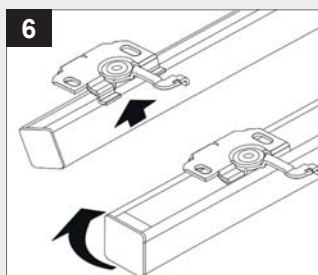
Klebeschienen vorbereiten



Montage der Klebeschienen am Flügel oder im Glasfalz



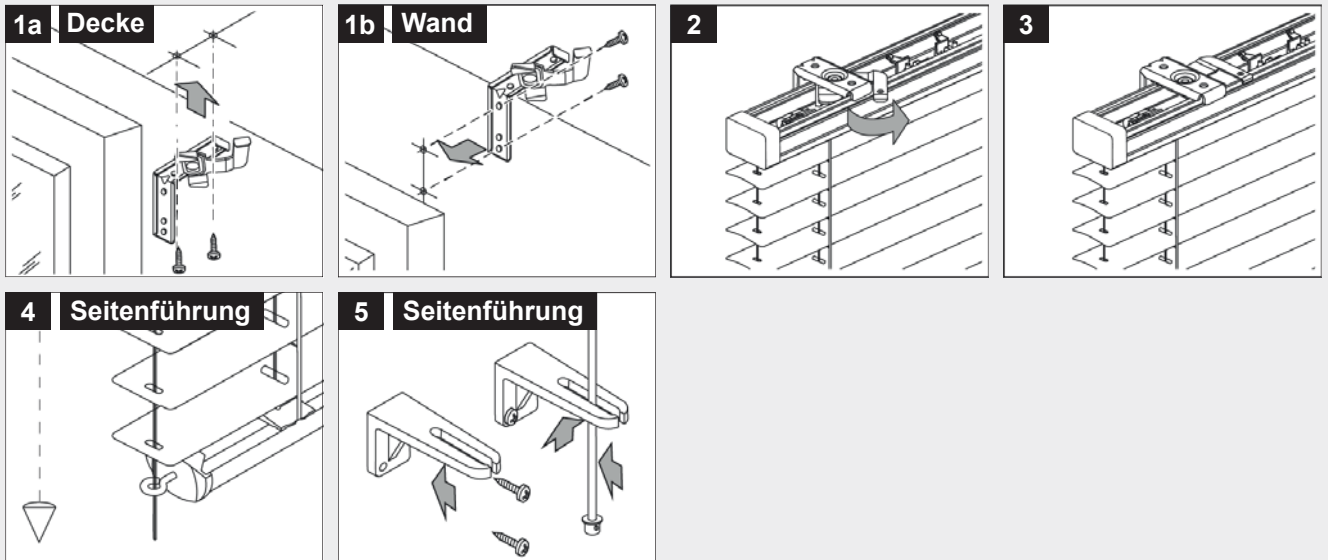
Montage der Jalousie an der Schiene



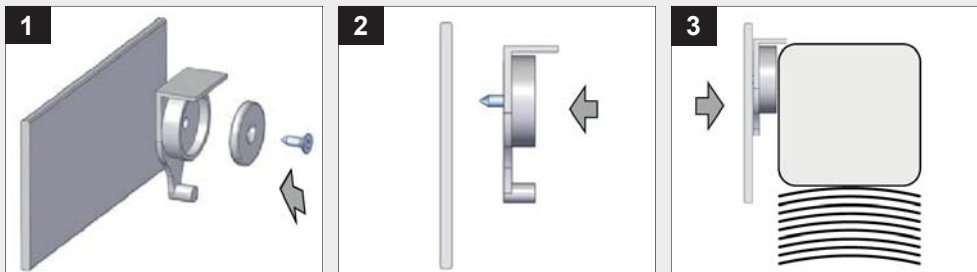
Montage **i**

Holzjalousie 50 mm

Decke/Wand



Montage der Abdeckblende



Wir wünschen Ihnen viel Freude mit Ihrer Jalousie!