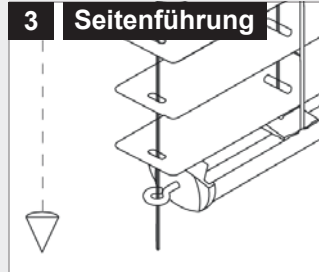
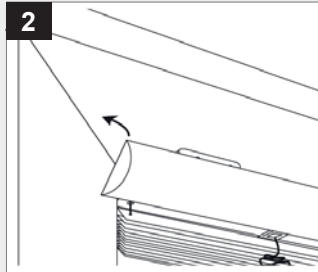
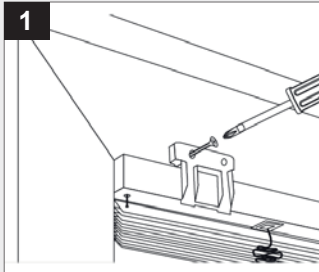


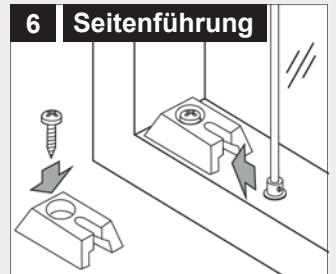
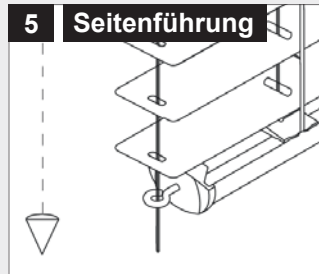
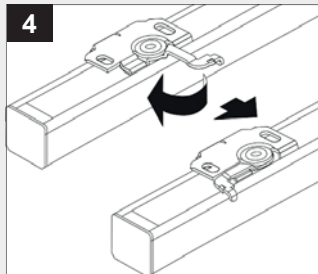
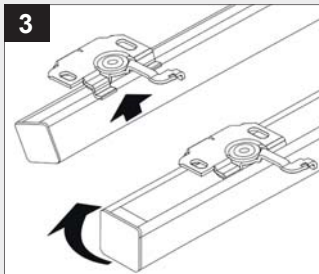
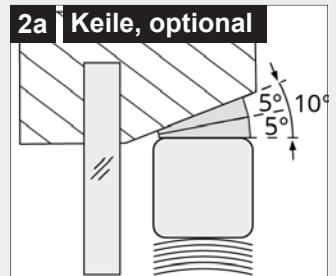
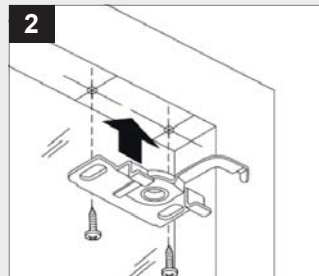
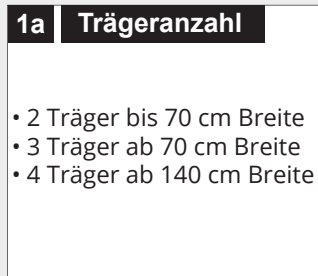
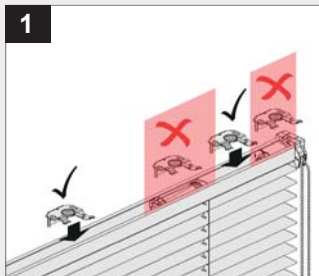
# Montage **i**

## Aluminium-Jalousie 16 und 25 mm

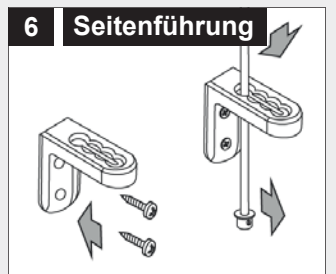
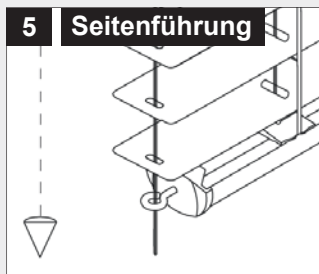
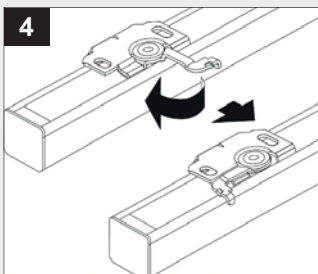
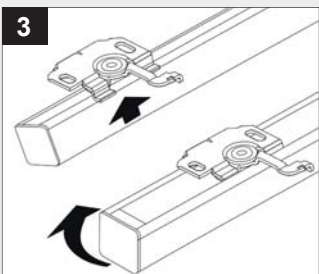
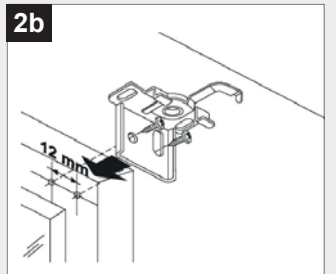
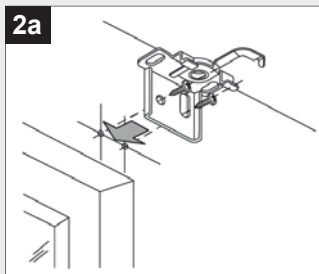
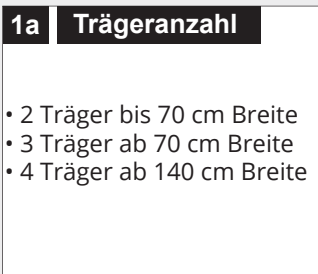
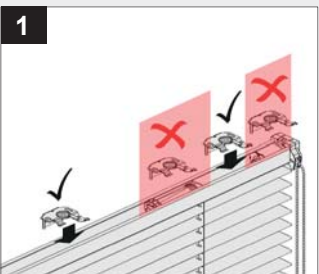
### Glasfalzmontage mit Abdeckblende



### Glasfalzmontage ohne Abdeckblende



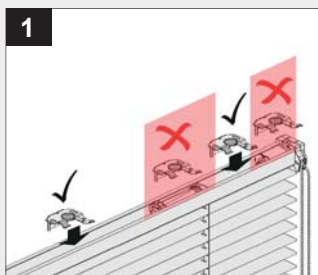
### Wand/Fensterflügel



# Montage **i**

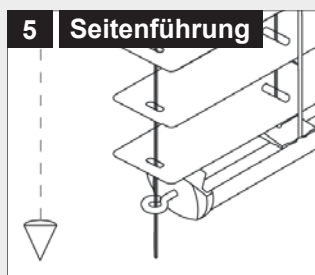
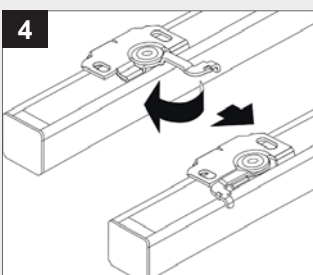
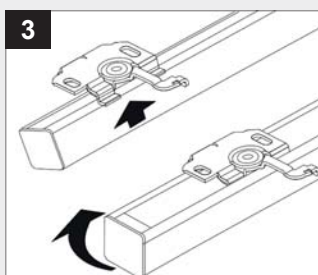
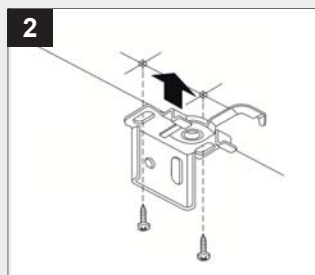
## Aluminium-Jalousie 16 und 25 mm

### Decke - Montage nach oben

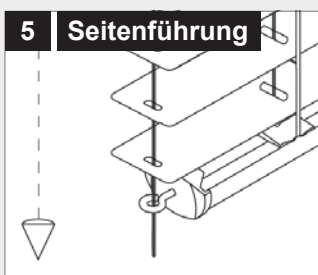
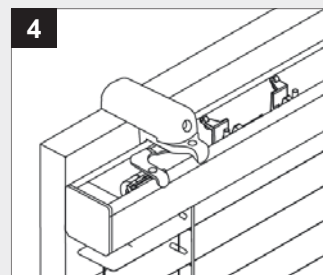
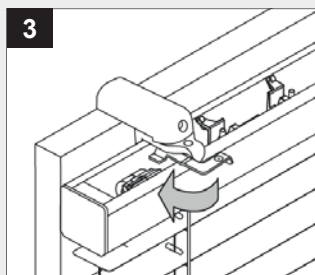
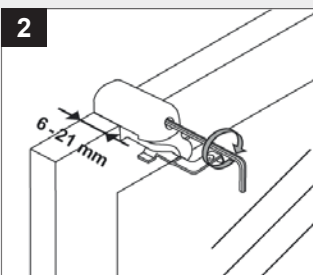
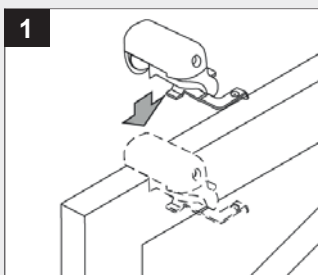


#### 1a Trägeranzahl

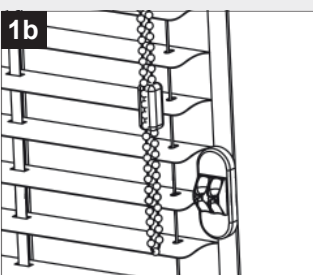
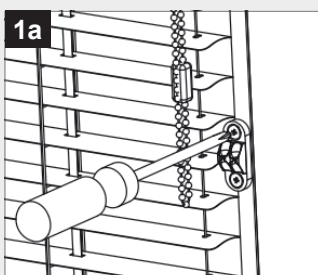
- 2 Träger bis 70 cm Breite
- 3 Träger ab 70 cm Breite
- 4 Träger ab 140 cm Breite



### Klemmträger



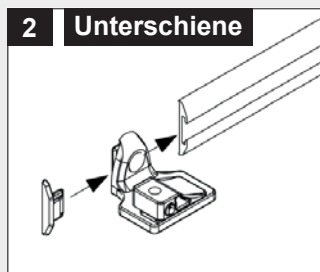
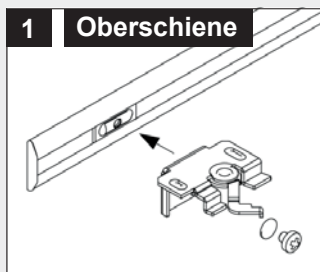
### Bedienkette/Schnurhalter



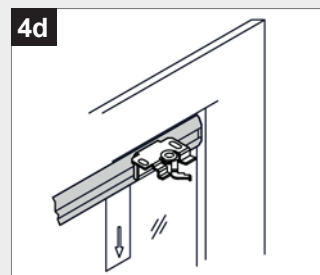
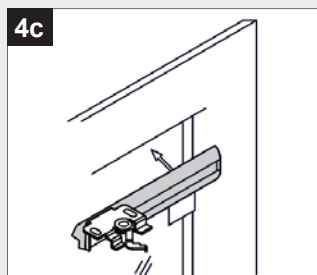
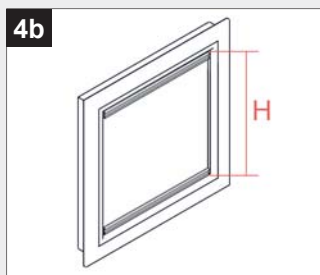
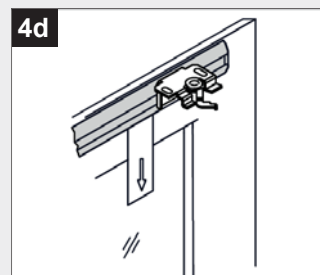
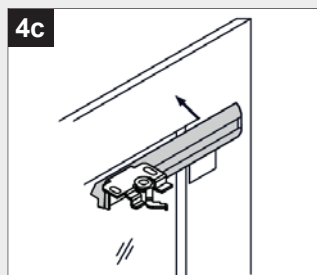
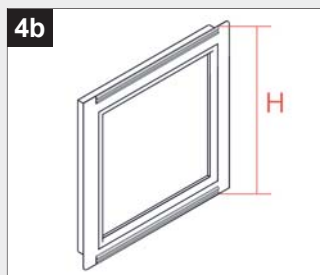
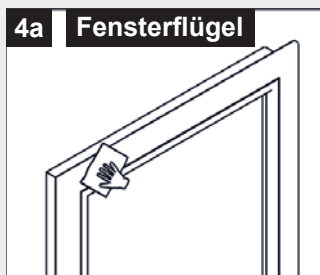
# Montage **i**

## Aluminium-Jalousie 16 und 25 mm - Klebemontage

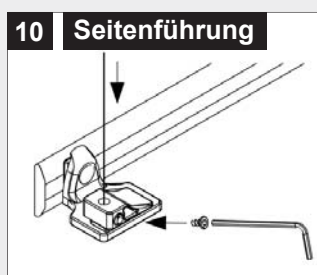
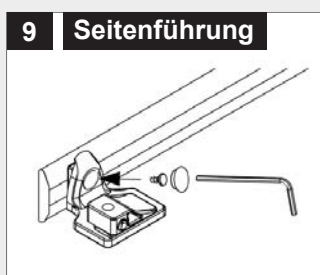
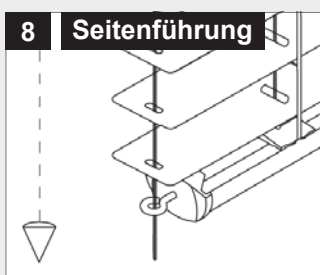
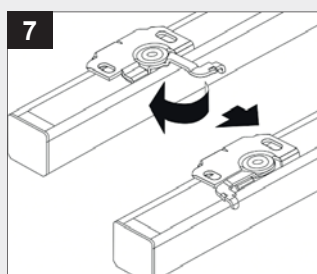
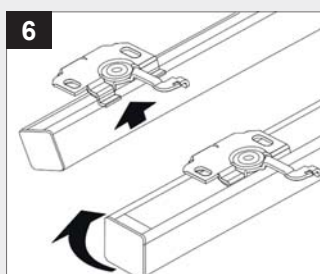
### Klebeschienen vorbereiten



### Montage der Klebeschienen am Flügel oder im Glasfalz



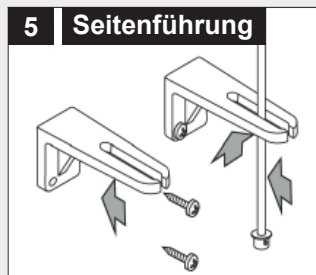
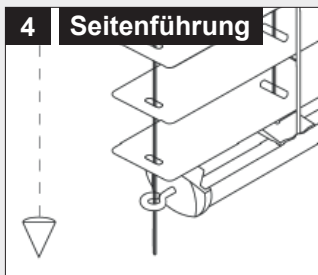
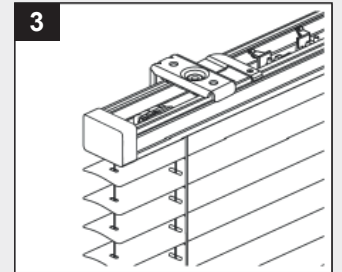
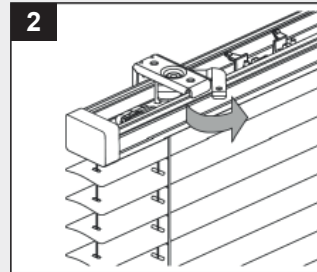
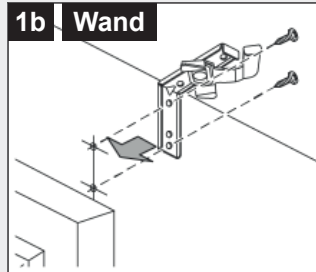
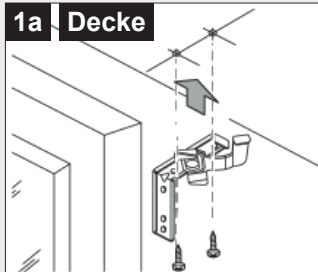
### Montage der Jalousie an der Schiene



# Montage **i**

## Aluminium-Jalousie 50

Decke/Wand



Technische Änderungen vorbehalten.

Wir wünschen Ihnen viel Freude mit Ihrer Jalousie!